

MONTHLY MEMBERSHIP PROGRESS REPORT

District 23 A

Results as of: 5/31/2020

GMT:

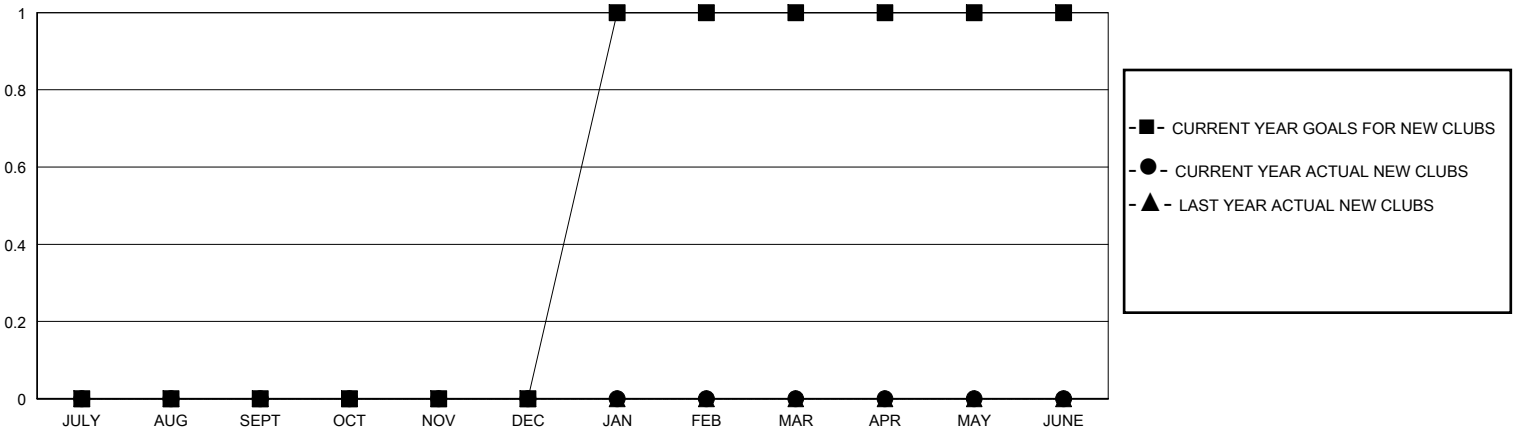
LOCATION CONNECTICUT

GMT CA

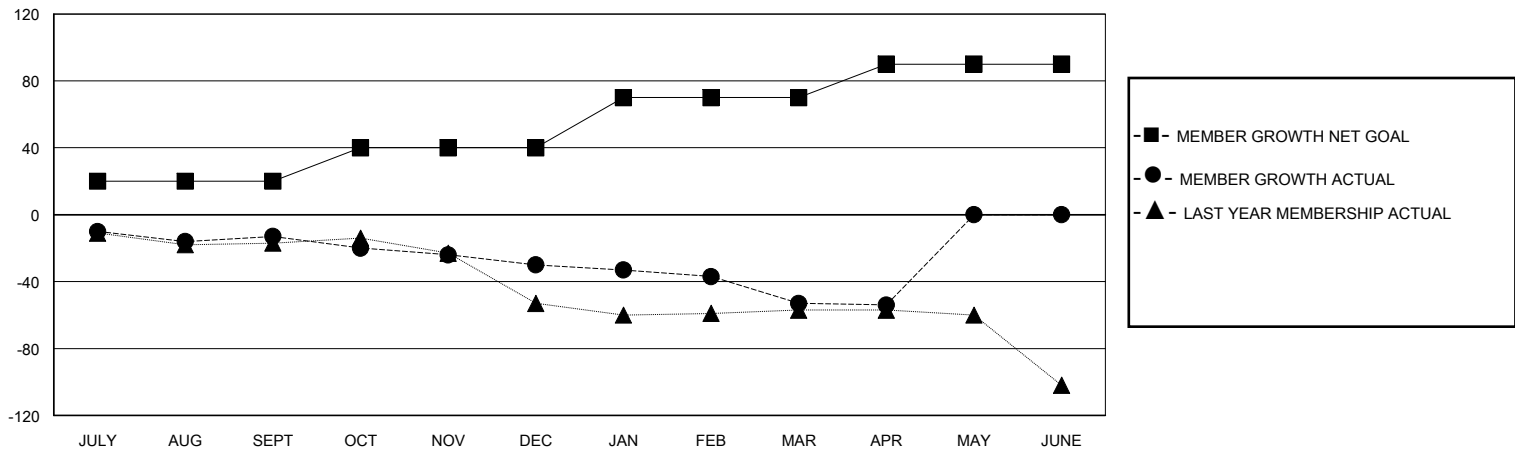
| Clubs | | | |
|-----------------------|---------------|-----------|---------------|
| RESULTS FOR 2019-2020 | | | |
| QUARTER | NEW CLUB GOAL | NEW CLUBS | DROPPED CLUBS |
| JULY/AUG/SEPT | 0 | 0 | 1 |
| OCT/NOV/DEC | 0 | 0 | 0 |
| JAN/FEB/MAR | 1 | 0 | 0 |
| APR/MAY/JUNE | 0 | 0 | 1 |

| Members | | | |
|-----------------------|------------------------|----------------------|--|
| RESULTS FOR 2019-2020 | | | |
| QUARTER | MEMBER GROWTH NET GOAL | MEMBER GROWTH ACTUAL | DROPPED MEMBERS ACTUAL (including transfers) |
| JULY/AUG/SEPT | 20 | 16 | 27 |
| OCT/NOV/DEC | 20 | 16 | 33 |
| JAN/FEB/MAR | 30 | 19 | 40 |
| APR/MAY/JUNE | 20 | 1 | 2 |

GOALS AND ACTUAL NEW CLUBS CUMULATIVE



GOALS AND ACTUAL MEMBERS CUMULATIVE



| | | | |
|------------------------|--|------------------------------------|--------------|
| DROPPED CLUBS: 2 | 23 CLUBS OF 50 ADDED 1 OR MORE NEW MEMBERS | <u>GENDER DISTRIBUTION</u> | |
| | | MALE | 878 (66.57%) |
| | | FEMALE | 441 (33.43%) |
| <u>DROPPED MEMBERS</u> | | TOTAL FAMILY UNIT MEMBERS 170 | |
| DECEASED | 14 | FAMILY MEMBERS PAYING HALF DUES 87 | |
| CLUB CANCELLED | 0 | | |
| OTHER | 88 | | |
| TOTAL | 102 | | |

[CLICK HERE FOR CUMULATIVE MEMBERSHIP DATA](#)